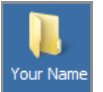


The Samsung W-300 is both a video recorder and a still image camera. Video and images captured with this camera can be easily moved to the computer for further manipulation by using the built-in USB port. Video and image files can be uploaded to your Moodle course site for playback by your students.

Important: Before you begin using the camera, create a folder on the Desktop with your first and last name. You will use this folder as temporary storage for your audio files as you move them from the recorder to the computer.

To create the folder, right-click a blank area on the Desktop, point to *New*, and then click *Folder*. Type your first and last name then press the *Enter* key.




Power on the device

Press the Power button (found on the right-hand side when looking at the LCD screen).

Video:

Set the device to video

Press the *Mode* button to choose the video recording mode. 

Creating a Recording

Press the *OK* button to begin recording.

Press the *OK* button again to stop recording.

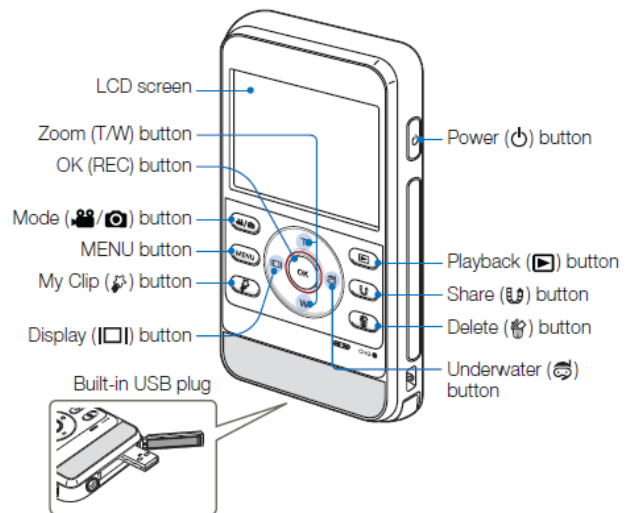
Still Images:

Set the device to still camera mode

Press the *Mode* button to set the still camera mode. 

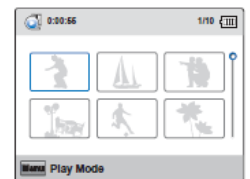
Creating a Still Image

Press the *OK* button to take the picture. The shutter sound is heard and the photo is recorded.



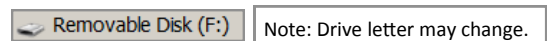
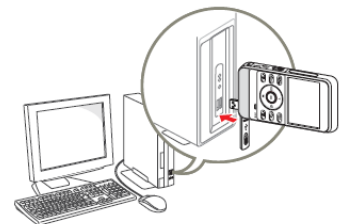
Playback (Video or Still Images):

1. Press the *Playback* button (right arrow) to set the playback mode.
2. Press *Menu* to select either Video or Photo. Based on your selection, either recorded videos or still images will appear in the thumbnail index view.
3. Use the *T*, *W*, *Display* or *Underwater* buttons (all found around the *OK* button) to move through the videos or still images.
4. Select the desired video or photo by pressing the *OK* button.



Moving Files from the Camera to the Computer:

1. Connect the camera to the computer using the built-in USB plug (found at the bottom of the camera).
2. From the AutoPlay dialog box, select *Open folder* to view files. The camera will appear like a USB drive (it will be assigned a drive letter).
3. Click once to open the Removable Disk that represents the camera. Videos are stored in the *Video folder > 100Video*, while still images are stored in the *DCMI folder > 100Photo folder*.
4. Move to the desired folder.
5. Copy your file (or files) to the folder you initially made on the computer's Desktop. Right click on a file, select *Copy*, open the folder on the Desktop, right click and select *Paste*.



Adding Your Video or Still Image to Moodle

1. Log into Moodle and enter your course site.
2. With editing turned on, select *File* from the *Add a resource* drop-down list.
3. Type a name for this item in the *General > Name field*. You can also enter a description for the item. For the description to display for the students, check the *Display description on course page* box.
4. From the Content area, click the *Add* button.
5. From the File Picker box, click the *Upload a file link*.
6. Click *Browse* to find your file and select that file by double-clicking on the file name.
7. Click the *Upload this file* button.
8. Under Options>Display, select *Force download*.
9. Click *Save and return to course*.

Note: the File function is meant for one file upload only. If you want to upload multiple files at one time, select Folder from the Add a resource menu and then add multiple files into that folder.

Video and Still Image Editing:

To edit video taken with this camera, use the Intelli-studio installed on this computer.


Watch this movie to learn about video editing with Intelli-studio,

<http://support-us.samsung.com/spsn/detail.jsp?scheduleId=709>

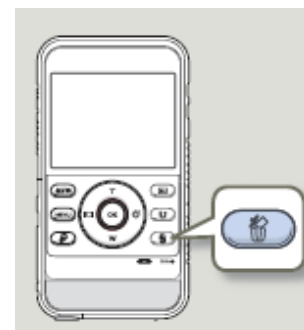
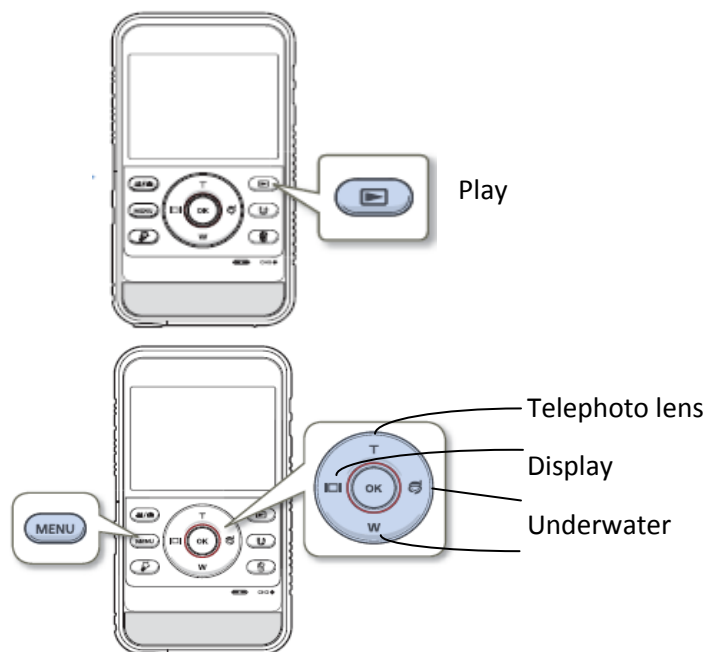
To edit still images taken with this camera, refer to the GIMP handout provided with this laptop.

Erase All Files Before Returning the Device

Before returning the Camera, please erase all files. Be sure to first save videos and still images to your computer. Follow the directions below to delete all of the the videos or photos from the camera's storage media.

1. Press *Menu*.
2. Press *Playback* (right arrow).
3. Press the *Underwater* button . 
4. Press *W* to move to the *All Files* menu option.
5. Press the *OK* button.
6. Press the *Display* icon to select *Yes*.
7. Press the *OK* button.

Key Camera Buttons



Deleting a single file by using the Delete button. Select the file to be deleted in the thumbnail view, and then press the Delete button.